

Louisiana Senate Finance Committee



FY26 Executive Budget

**04-160 - Department of
Agriculture & Forestry**

March 2025

*Senator Cameron Henry, President
Senator Glen Womack, Chairman*





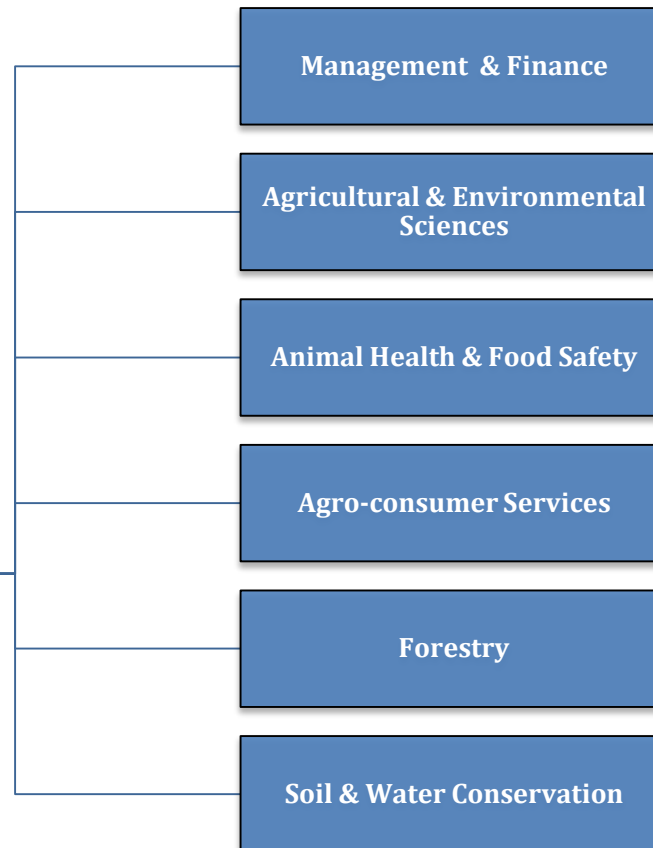
FY26 Recommended Budget

Schedule 04-160 — Department of Agriculture and Forestry

Departmental mission — The mission of the Louisiana Department of Agriculture and Forestry is to administer the laws, rules and regulations of the state regarding the growing, harvesting, processing, storing and sale of forest, crop and livestock commodities. These laws, rules and regulations are to ensure that foods are prepared in sanitary processing facilities and are safe to eat, that the state's food manufacturing sector receives the full benefit of the agency's marketing expertise, that the state's soil and water resources are protected to ensure the optimum growth and yield of crops and forests, that the state's forests are protected from harmful diseases and fires, and that Louisiana livestock receives the best in veterinary care. The department also works with other state, regional, national and international sectors of business and government in fulfillment of its goal to provide oversight services and administrative assistance in the conduct of the affairs of rural Louisiana.



**04-160 Dept. of
Ag. & Forestry
Commissioner Mike Strain**





FY26 Recommended Budget

Schedule 04-160 — Department of Agriculture and Forestry

Agency	Program Description
Management & Finance	Provides department-wide coordination, personnel and basic resources which are essential to the accomplishment of the Department's mission, in a timely, effective and accurate manner and in compliance with applicable laws, rules and regulations.
Agricultural & Environmental Sciences	The mission of the Office of Agricultural and Environmental Sciences is to ensure that fertilizers, agricultural liming materials and pesticides meet all requirements of law; to monitor, prevent, control and eradicate plant pests and diseases that threaten Louisiana's agriculture, environment and economy; to facilitate agricultural exports through certification of products; to oversee the qualifications and practices of persons engaged in the green industry; to protect human health and the environment by ensuring the proper labeling, distribution, storage, use, application and disposal of pesticides, and through enforcement of all pesticide laws; to ensure that seed sold for planting meets label guarantees and quality standards; and to ensure a safe, abundant supply of food and fiber.
Animal Health & Food Safety	Maintains a safe and healthful food supply for the people of Louisiana, while simultaneously protecting and safeguarding the producers of these products. The program inspects and grades food products, controls livestock diseases and tracks ownership of livestock through a branding activity. The activities of this program are: Administration, Federal/State Meat Program, Poultry and Egg Inspection, Food Quality Services, Livestock Disease Prevention, Livestock Theft Prevention, Emergency Response Team, and Food Distribution Program.
Agro-Consumer Services	Ensures that equity prevails in the marketplace by regulating various aspects of commerce and trade and by promoting and heightening consumer awareness of Louisiana's agricultural commodities to increase sales, thereby enhancing the economic well being of Louisiana farmers and the State as a whole. The Office ensures that Louisiana consumers get what they pay for, that producers have markets available and receive fair compensation for their commodities, and that businesses have a favorable environment in which to operate.
Forestry	Ensures sustained, multiuse forestlands for the citizens of Louisiana. This goal takes into account the production of wood fiber while enhancing the recreational, wildlife and environmental values of forestlands.
Soil & Water Conservation	Achieves a productive balance between Louisiana agricultural production and processing and a healthy environment, wherein soil loss is reduced to within tolerable limits, water quality impairments due to agricultural processes are significantly reduced, and the quality of the state's wildlife habitat, wetlands and other natural areas and resources are enhanced.



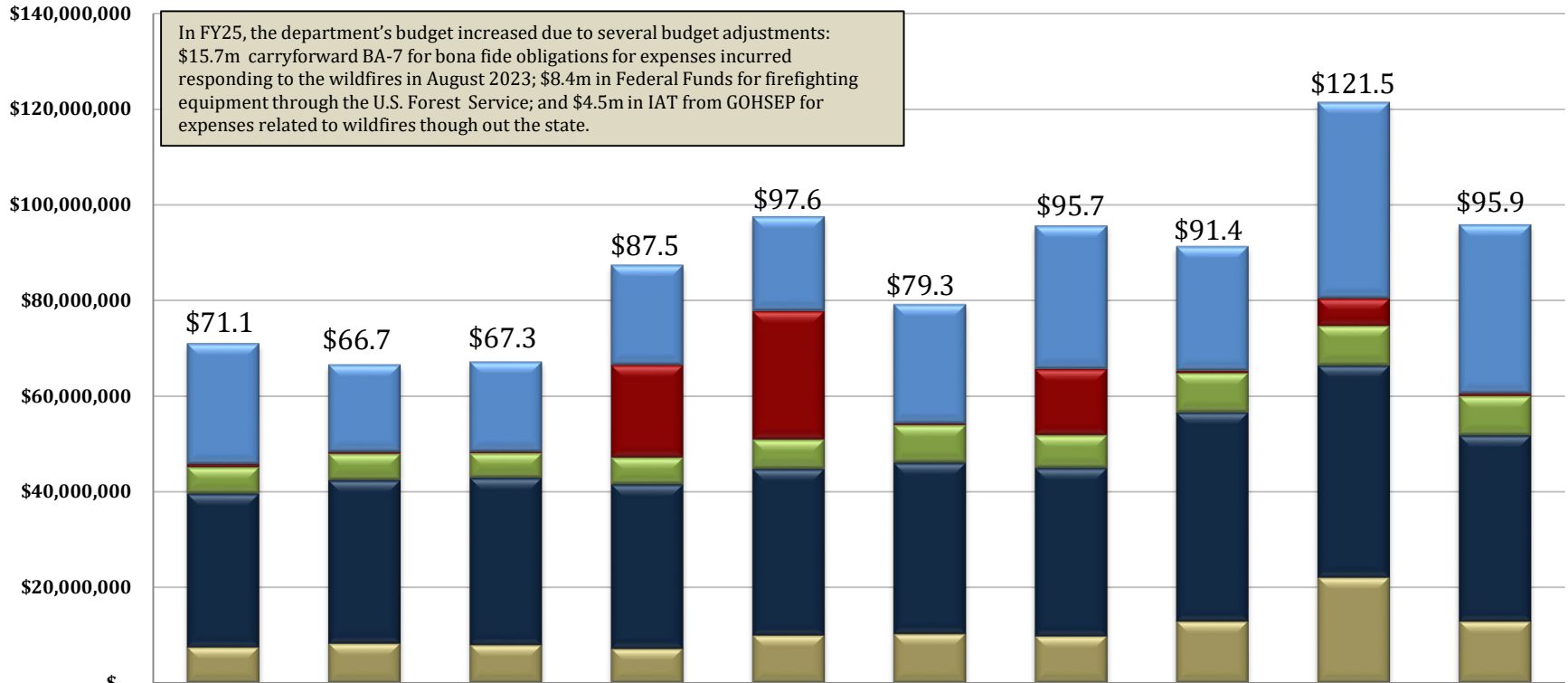
Department of Agriculture and Forestry

Changes in Funding since FY18

Total Budget by Fiscal Year and Means of Finance (in \$ millions)

Change from FY18 to FY26 is +34.9%. (Actual to Recommended)

Change from FY18 to FY24 is +34.6%. (Actual to Actual)



In FY25, the department's budget increased due to several budget adjustments: \$15.7m carryforward BA-7 for bona fide obligations for expenses incurred responding to the wildfires in August 2023; \$8.4m in Federal Funds for firefighting equipment through the U.S. Forest Service; and \$4.5m in IAT from GOHSEP for expenses related to wildfires though out the state.

	FY18 Actual	FY19 Actual	FY20 Actual	FY21 Actual	FY22 Actual	FY23 Actual	FY24 Actual	FY25 Enacted	FY25 as of 12/1/24	FY26 Rec
■ SGF	\$25,275,042	\$18,293,320	\$18,785,734	\$20,925,876	\$19,813,547	\$24,955,789	\$29,951,345	\$26,029,615	\$41,036,778	\$35,343,397
■ IAT	\$676,004	\$408,902	\$383,592	\$19,412,457	\$26,886,100	\$387,345	\$13,904,563	\$537,345	\$5,837,147	\$539,035
■ FSGR	\$5,472,748	\$5,517,983	\$5,163,433	\$5,573,570	\$6,091,598	\$7,866,240	\$6,848,956	\$8,253,309	\$8,253,309	\$8,252,743
■ STAT DED	\$32,094,974	\$34,091,628	\$34,860,010	\$34,312,005	\$34,716,599	\$35,733,876	\$35,073,108	\$43,588,080	\$44,232,304	\$38,803,433
■ FED	\$7,612,026	\$8,385,158	\$8,083,434	\$7,293,320	\$10,120,511	\$10,372,521	\$9,927,614	\$13,000,196	\$22,126,709	\$12,988,479



Statewide Budget Adjustments Recommended for FY26

State General Fund (Direct)	Interagency Transfers	Fees and Self-generated Revenues	Statutory Dedications	Federal Funds	Total	T.O.	Adjustment
\$41,036,778	\$5,837,147	\$8,253,309	\$44,232,304	\$22,126,709	\$121,486,247	590	FY25 Existing Operating Budget as of 12-1-24
\$9,090,750	\$0	\$0	\$195,000	\$324,000	\$9,609,750	0	Acquisitions and Major Repairs
(\$657,254)	\$0	\$0	(\$362,866)	\$0	(\$1,020,120)	0	Attrition Adjustment
\$12,175	\$0	\$0	\$0	\$0	\$12,175	0	Civil Service Fees
\$83,862	\$0	\$0	\$78,364	\$0	\$162,226	0	Civil Service Training Series
\$136,150	\$0	\$0	\$64,612	\$0	\$200,762	0	Group Insurance Rate Adjustment for Active Employees
\$213,215	\$0	\$0	\$0	\$0	\$213,215	0	Group Insurance Rate Adjustment for Retirees
(\$12,190)	\$0	\$0	\$0	\$0	(\$12,190)	0	Legislative Auditor Fees
\$866,989	\$0	\$0	\$402,593	\$0	\$1,269,582	0	Market Rate Classified
\$0	\$0	\$0	(\$378,320)	\$0	(\$378,320)	(4)	Personnel Reductions
(\$1,145,067)	\$0	\$0	(\$5,167,000)	(\$1,165,000)	(\$7,477,067)	0	Non-recurring Acquisitions & Major Repairs
(\$15,007,163)	\$0	\$0	(\$644,224)	(\$8,895,177)	(\$24,546,564)	0	Non-recurring Carry-Forwards
\$0	\$0	\$1,252	\$0	\$0	\$1,252	0	Office of State Procurement
\$28,402	\$0	\$0	\$0	\$0	\$28,402	0	Office of Technology Services (OTS)
\$85,116	\$0	\$0	\$347,738	\$0	\$432,854	0	Related Benefits Base Adjustment
(\$334,665)	\$0	\$0	(\$186,549)	\$0	(\$521,214)	0	Retirement Rate Adjustment
\$208,976	\$0	\$0	\$0	\$0	\$208,976	0	Risk Management
\$737,083	\$0	\$0	\$111,403	\$0	\$848,486	0	Salary Base Adjustment
\$240	\$0	\$0	\$0	\$0	\$240	0	State Treasury Fees
\$0	\$0	(\$1,818)	\$0	\$0	(\$1,818)	0	UPS Fees
(\$5,693,381)	\$0	(\$566)	(\$5,539,249)	(\$9,736,177)	(\$20,969,373)	(4)	Total Statewide Adjustments
\$0	(\$5,299,802)	\$0	\$0	\$0	(\$5,299,802)	0	TOTAL NON-RECURRING OTHER ADJUSTMENT
\$0	\$1,690	\$0	\$110,378	\$597,947	\$710,015	0	TOTAL OTHER ADJUSTMENTS ADJUSTMENT
\$35,343,397	\$539,035	\$8,252,743	\$38,803,433	\$12,988,479	\$95,927,087	586	Total FY26 Recommended Budget
(\$5,693,381)	(\$5,298,112)	(\$566)	(\$5,428,871)	(\$9,138,230)	(\$25,559,160)	(4)	Total Adjustments (Statewide and Agency-Specific)



Department of Agriculture & Forestry

Non-Statewide Adjustments Recommended for FY26

Non-Recurring Other Adjustments

State General Fund (Direct)	Interagency Transfers	Fees and Self-generated Revenues	Statutory Dedications	Federal Funds	Total	T.O.	Adjustment
\$0	(\$782,184)	\$0	\$0	\$0	(\$782,184)	0	Non-recurs funding from GOHSEP through FEMA for emergency response efforts during Hurricane Francine.
\$0	(\$4,517,618)	\$0	\$0	\$0	(\$4,517,618)	0	Non-recurs funding from GOHSEP through FEMA for payments to states and federal agencies that provided assistance during the August 2023 wildfires.
\$0	(\$5,299,802)	\$0	\$0	\$0	(\$5,299,802)	0	Total Non-Recurring Other Adjustments

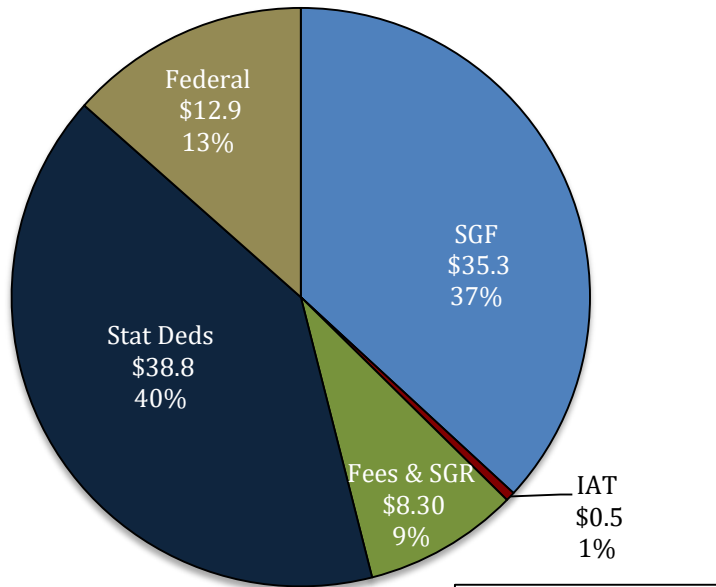
Other Adjustments

State General Fund (Direct)	Interagency Transfers	Fees and Self-generated Revenues	Statutory Dedications	Federal Funds	Total	T.O.	Adjustment
\$0	\$0	\$0	\$135,378	\$0	\$135,378	0	Funds needed to pay annual installment of promissory note for the purchase of four (4) new heavy duty trucks in Weights & Measures Program.
\$0	\$1,690	\$0	\$0	\$0	\$1,690	0	Increase in Interagency Transfers from the Coastal Protection and Restoration Authority (CPRA) for revegetation project work being performed by agency and district personnel.
\$0	\$0	\$0	\$0	\$413,855	\$413,855	0	Increases four (4) existing grants from the USDA/NCRS that were recently overhauled/renewed along with a new grant (Watershed Technician) awarded in September of 2024. This funding will provide for software, additional travel for workshops, fuel for visiting more sites, supplies, and administrative costs.
\$0	\$0	\$0	\$0	\$184,092	\$184,092	0	Increases the National Animal Disease Preparedness and Response Program grant through the USDA. This funding will be used by the Homer Poultry Lab for preventing/addressing highly pathogenic avian influenza.
\$0	\$0	\$0	(\$25,000)	\$0	(\$25,000)	0	Reduction in the anticipated revenues from the Livestock Brand Commission Fund.
\$0	\$1,690	\$0	\$110,378	\$597,947	\$710,015	0	Total Other Adjustments



Department of Agriculture and Forestry FY26 Recommended Means of Finance

**FY26 Recommended
Total Means of Finance
(In Millions)**



Total \$95.9 m.

Non-SGF Sources of Funding:

Non-SGF means of finance in the department include Interagency Transfers, Fees & Self-generated Revenues, Statutory Dedications and Federal monies.

Interagency Transfers are derived from the Louisiana Department of Health, the Office of Coastal Protection and Restoration for developing erosion control plans along the coast of Louisiana, Best Management practices, water quality, and wetland resource programs.

Fees and Self-generated Revenues are derived from insurance and other reimbursements; reimbursement from LAFA for salaries of Indian Creek personnel; grading fees assessed on meat, meat products, fish and fish products; vaccination fees; Sale of Health Certificates; Equine Infectious Anemia Surveillance & Horse Identification Program; Deer farming; Turtle Farmers License fee; Livestock Sanitary Board; Poultry Graders; LA Egg Commission; Egg Assessment Fees; funds collected from assessments on sales of milk and dairy products; timber sales from the State Forests; fees assessed for prescribed burning and general forestry assistance materials; and from the sale of commodities and services.



Department of Agriculture and Forestry FY26 Recommended Means of Finance

Non-SGF Sources of Funding: (Continued)

Statutory Dedications are received from a variety of sources, including the

- Structural Pest Control Commission Fund (S) via fees on branches and contracts of termite control operators;
- Feed and Fertilizer Fund (S) via tonnage fees on feed and fertilizer;
- Louisiana Agricultural Finance Authority (LAFA) Fund (S) as a result of interest income and fees collected with any bonds issued by LAFA;
- Pesticide Fund (S) via fees from labeling and registration of certain pesticides and licensing and certification of pesticide applicators
- Petroleum Products Fund (S) via assessments on petroleum product volume from distributors;
- Agricultural Commodity Dealers and Warehouse Fund (S) via assessments on commodities stored at the first point of sale, inspection and certification of moisture meters, warehouse licenses;
- Weights and Measures Fund (S) via inspection fees for weights and measures scales, weigh masters, scanners, and taxi meters;
- Horticulture and Quarantine Fund (S) via fees collected for Apiary permits, fees for collecting and enforcing different horticultural professions and occupations, fees for inspection and certification of cotton for the presence of the boll weevil, and reasonable fees to help defray the expenses incurred for salaries for inspecting nursery stock grown or propagated for sale or distribution;
- Seed Commission Fund (S) via fees from seed certification and from the licensing and testing in the hemp program;
- Sweet Potato Pests and Diseases Fund (S) via sweet potato inspection fees;
- Livestock Brand Commission Fund (S) via fees for recording brands or marks, renewals and transfers;

Non-SGF Sources of Funding: (Continued)

- Forest Protection Fund (S) paid by the landowners at the rate of 8 cents per acre;
- Forest Productivity Fund (S) that receives 75% of the state's share of the timber severance tax;
- Agricultural Commodity Self-insurance Fund (S)
- Wildfire Suppression Subfund (S)
- Grain and Cotton Indemnity Fund (S)
- Louisiana Equine Promotion and Research Fund (S)

(S) = Statutory Fund

Federal Funds are received from the U.S. Department of Agriculture, the Environmental Protection Agency (EPA) - Enforcement and Certification Programs, the Ground Water Protection Worker Protection & Endangered Species Program, the USDA - Imported Fire Ant Program, the EPA - Feed Inspection Capacity Program, the federally funded Livestock Sanitary Board Program, reimbursements from the U.S. Department of Agriculture (USDA) for grading and certification of meat and meat products, reimbursements from the U.S. Department of Commerce for certification of fish and fish products, Federal Egg Product Inspection, the Federal Container Salvage Fund, State Administrative Expenses for food distribution, the U.S. Department of Agriculture (USDA) for commodity credit for reimbursement of audit expenses, Fruit and Vegetable Grain Cooperative Agreement, Weights and Measures Cooperative Agreement, the Crop and Livestock Statistical Reporting Service, the U.S. Forest Service for forest protection and fire assistance; U.S. Department of Agriculture (USDA) for development of watershed plans.



Department of Agriculture and Forestry

Dedicated Funds FY24, FY25, and FY26

Dedicated Funds	Source of Funding	FY24 Actual	FY25 EOB	FY26 Recommended
Agricultural Commodity Dealers & Warehouse Fund	Fees, fines, assessments, and penalties	\$1,915,861	\$2,211,591	\$2,215,591
Feed and Fertilizer Fund	Fees, fines, assessments, and penalties	\$2,119,016	\$2,838,323	\$2,838,323
Forest Protection Fund	Forest protection tax on timber land	\$552,776	\$1,087,224	\$820,000
Forestry Productivity Fund	Portion of timber severance tax	\$176,829	\$350,000	\$350,000
Horticulture and Quarantine Fund	Fees, fines, assessments, and penalties	\$1,600,859	\$2,600,000	\$2,600,000
Livestock Brand Commission Fund	Fees related to livestock branding and recordation	\$10,000	\$50,000	\$25,000
Louisiana Agricultural Finance Authority Fund	A portion of taxable net slot machine proceeds	\$11,799,673	\$16,801,326	\$11,801,326
Pesticide Fund	Fees, fines, assessments, and penalties	\$6,217,890	\$6,443,316	\$6,320,172
Petroleum Products Fund	Fees, fines, assessments, and penalties	\$4,484,426	\$4,766,510	\$4,833,388
Seed Fund	Fees	\$788,580	\$1,126,313	\$1,126,313
Structural Pest Control Commission Fund	Permit, registration, and related fees	\$1,552,031	\$1,552,031	\$1,552,031
Sweet Potato Pests and Diseases Fund	Fees on bushels of sweet potatoes	\$98,610	\$200,000	\$200,000
Weights and Measures Fund	Fees on commercial weighing and measuring devices	\$3,026,003	\$3,330,670	\$3,246,289
Wildfire Suppression Subfund	Portion of timber severance tax	\$730,554	\$875,000	\$875,000
TOTALS		\$35,073,108	\$44,232,304	\$38,803,433



Categorical Expenditures

Examples of Categories

Departments expend funding in the five major categories listed below.

Personal Services

- Salaries – Regular, overtime, and termination pay for Classified and Unclassified personnel.
- Other Compensation – Wages, student labor, compensation for board members and/or board of trustees, evening instruction, university instructors, etc.
- Related Benefits – Retirement contributions, post-retirement contributions/benefits, FICA tax, Medicare tax, group insurance contributions, compensated absences, other related benefits, taxable fringe benefits, etc.

Total Operating Expenses

- Travel – In-state and Out-of-state, including meal reimbursement.
- Operating Services – Advertising, printing, insurance, maintenance, rentals, data processing, internet costs, dues and subscriptions, mail delivery, telephones, data lines, vehicle tracking and telematics, utilities, depreciation, amortization, banking services, credit card fees, etc.
- Supplies – office supplies and equipment, computers, clothing and uniforms, medical, pharmaceutical, food, automotive, repair and maintenance, software, etc.

Professional Services – Accounting, auditing, management consulting, engineering, architectural, legal, medical and dental, veterinary, information technology, etc.

Total Other Charges

- Other Charges – Aid to school boards, local government, etc.; public assistance; miscellaneous charges; judgments, fines, and penalties; interest on judgments; punitive/compensatory damages; OC personal services, operating expenses, professional services; contract attorney expenses; recoupments; furlough; contractual services; interest expense; claim payments; commercial group insurance; reinsurance; loans issued; disbursements; etc.
- Debt Service – Principal, interest, related charges, reserve requirement, amortization, and bond premiums.
- Interagency Transfer Line-Item Expenditure – Any expenses paid for with Interagency Transfers – from commodities and services to equipment.

Acquisitions and Major Repairs

- Acquisitions – Land; buildings; automobiles; aircraft; accessories; equipment; software; hardware; farm and heavy equipment; boats; capital outlay expenditures; construction; etc.
- Major Repairs – Land improvement; buildings; automotive; grounds; boats; aircraft; movable equipment; farm equipment; medical; office; library; education; recreation; communication; other equipment; pollution remediation; etc.

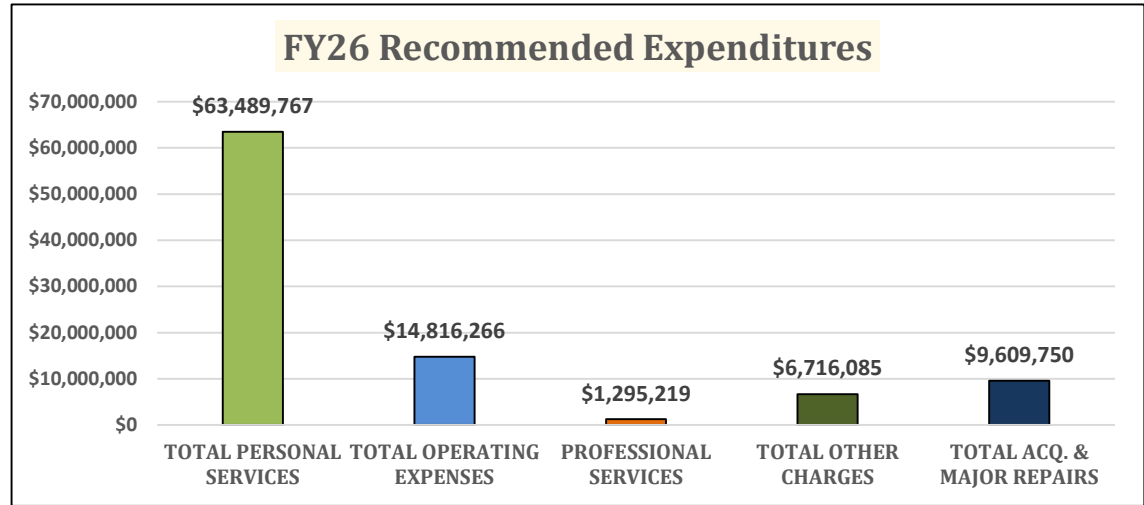


Department of Agriculture and Forestry Categorical Expenditures at FY26 Recommended

The largest expenditure category in Ag. & Forestry for FY26 Recommended is Total Personal Services at 66.2 percent of the budget.

Within this category, Salaries make up 59 percent of expenditures, while Related Benefits contributes 38 percent.

Total Operating Expenses make up 15 percent of expenditures, followed by Total Acquisitions & Major Repairs at 10 percent. Total Other Charges make up 7 percent of total expenditures.



Categorical Expenditures	FY24 Actual	FY25 Enacted	FY25 EOB as of 12/01/24	FY26 Recommended	Difference FY25 EOB vs. FY26 REC
Salaries	\$37,262,170	\$36,723,453	\$36,789,577	\$37,732,142	\$942,565
Other Compensation	\$1,823,695	\$1,783,007	\$1,783,007	\$1,783,007	\$0
Related Benefits	\$23,747,888	\$23,738,188	\$23,738,758	\$23,974,618	\$235,860
TOTAL PERSONAL SERVICES	\$62,833,752	\$62,244,648	\$62,311,342	\$63,489,767	\$1,178,425
Travel	\$481,253	\$742,805	\$522,805	\$570,848	\$48,043
Operating Services	\$5,695,995	\$7,640,763	\$7,985,653	\$7,620,666	(\$364,987)
Supplies	\$5,454,140	\$6,245,159	\$6,510,499	\$6,624,752	\$114,253
TOTAL OPERATING EXPENSES	\$11,631,388	\$14,628,727	\$15,018,957	\$14,816,266	(\$202,691)
PROFESSIONAL SERVICES	\$179,087	\$1,320,219	\$1,320,219	\$1,295,219	(\$25,000)
Other Charges	\$11,500,804	\$3,249,082	\$23,005,199	\$3,550,246	(\$19,454,953)
Debt Service	\$0	\$0	\$0	\$0	\$0
Interagency Transfers	\$2,589,868	\$2,928,802	\$2,928,802	\$3,165,839	\$237,037
TOTAL OTHER CHARGES	\$14,090,671	\$6,177,884	\$25,934,001	\$6,716,085	(\$19,217,916)
Acquisitions	\$6,970,688	\$7,037,067	\$16,901,728	\$9,399,750	(\$7,501,978)
Major Repairs	\$0	\$0	\$0	\$210,000	\$210,000
TOTAL ACQ. & MAJOR REPAIRS	\$6,970,688	\$7,037,067	\$16,901,728	\$9,609,750	(\$7,291,978)
TOTAL EXPENDITURES	\$95,705,586	\$91,408,545	\$121,486,247	\$95,927,087	(\$25,559,160)



Department of Agriculture and Forestry

FY26 Recommended Categorical Expenditures

Interagency Transfers

\$101,897	Legislative Auditor Fees
\$6,832	State Treasury Fees
\$24,446	Office of Technology Services (OTS) Printing
\$235,845	Office of Technology Services (OTS) Fees
\$95,970	Civil Service Fees
\$20,425	Office of State Procurement (OSP) Fees
\$31,942	Uniform Payroll System (UPS) Fees
\$1,253,346	Office of Risk Management (ORM) Premiums
\$17,500	Office of State Register
\$10,900	Office of Technology Services (OTS) - Printing
\$18,019	Department of Environmental Quality (DEQ) - Public health evaluations of health-related pesticide incident reports
\$56,601	Office of Technology Services (OTS) - Telecommunications
\$261,085	Office of Risk Management (ORM) Premiums
\$54,800	Office of Technology Services (OTS) Fees
\$38,731	Office of Technology Services (OTS) - Telecommunications
\$22,491	Civil Service Fees
\$89,914	Office of Risk Management (ORM) Premiums
\$107,691	Civil Service Fees
\$666,416	Office of Risk Management (ORM) Premiums
\$48,942	Office of Technology Services (OTS) - Telecommunications
\$2,046	Civil Service Fees

(Office of Technology Services payments: \$470,265)

Professional Services

\$31,954	IT Service Contracts
\$85,000	Legal services
\$332,271	LSU and Southern University contracts for Food Safety Management Act Program
\$1,000	Medical and Dental Services (CDL Medicals)
\$22,155	Legal Services
\$17,055	Medical and Dental Services (CDL Medicals)
\$805,784	LWIN Tech Vendor payments and Chemical Applicators for FHP
<u>Acquisitions and Major Repairs</u>	
\$4,180,000	Replacement of 101 fleet vehicles
\$168,700	Replace broken closed circuit television (CCTV) surveillance equipment at statewide facilities
\$79,550	Replacement vehicles for Livestock Brand Officers
\$85,000	Nitrogen determinator testing device for meat inspections
\$60,000	MINISCAN IR Vision Pro Fuel Analyzer
\$25,000	Seraphin 100 Gallon Prover and Trailer
\$90,000	Replacing three sets of J-Provers and Holding Tanks
\$20,000	Replacing laptops and printers
\$420,000	30 replacement plows for bulldozers
\$3,750,000	50 replacement heavy duty trucks
\$240,000	3 replacement house trailers for Grand Cane, Pollock and Sheridan
\$210,000	Repairs to fire substation offices in Deridder, Abita Springs, Minden
\$60,000	Two utility terrain vehicles (UTV)
\$50,000	One 3/4 ton extended cab truck
\$150,000	One 24 foot enclosed gooseneck trailer
\$20,000	Seven 3-D agricultural displays
\$1,500	One cargo truck bed cover



Department of Agriculture and Forestry

FY26 Recommended Categorical Expenditures

Other Charges

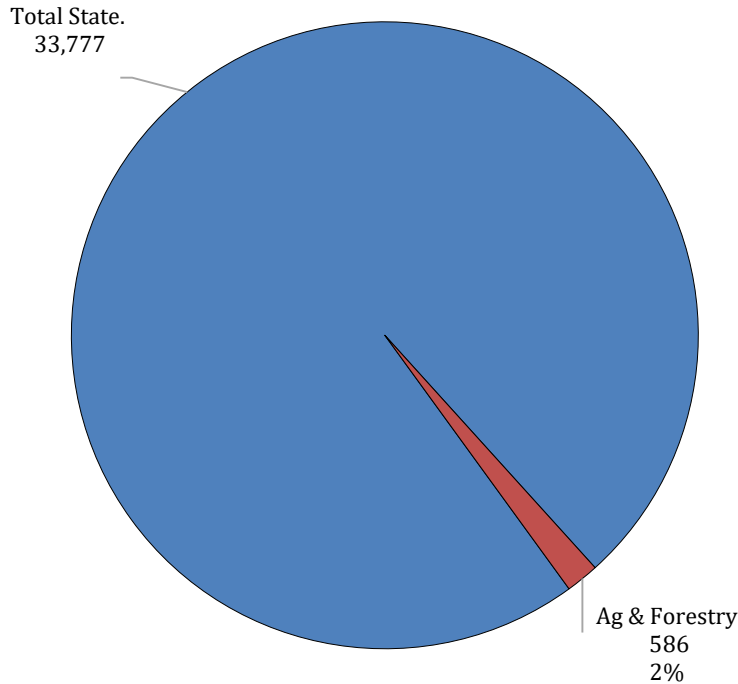
\$324,371	Seniors and Women, Infants, and Children (WIC), Farmers Market Nutrition Program (FMNP) and Specialty Block Grant Recoupments
\$46,426	Grant-related Operating Services
\$314,920	Grant-related contracts with LSU
\$232,029	Boll Weevil Salaries and Related Benefits
\$46,880	Grant related operating services
\$588,247	Grant related supplies
\$440,175	Operating Services for Fruit & Vegetable and Promotion & Research
\$79,000	Forestry grant related out of state travel
\$146,419	Forest Protection contracts, operating services, and supplies
\$1,052,336	Project activities for Non-Point 319, Farm Bill, and PSS programs
\$153,753	Project activities for the Vegetative Planting Program
\$125,690	Project activities for Watershed Technician Program



Department of Agriculture and Forestry

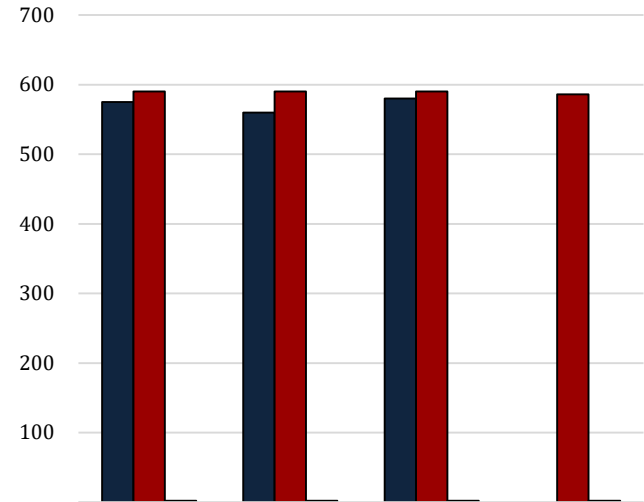
FTEs, Authorized T.O., and Other Charges Positions

**FY26 Recommended Department Positions
as a portion of
FY26 Recommended HB1 Authorized Positions**



FY25 number of funded, but not filled, positions as of January 2025 = 20

**Number
and
Types
of
Positions**



	2023	2024	2025	2026 Rec.
■ Total FTEs (1st July Report)	575	560	580	-
■ Authorized T.O. Positions	590	590	590	586
■ Other Charges Positions	2	2	2	2

The full-time equivalent or **FTE** definition refers to the number of hours considered full-time. For example, if an agency considers 40 hours full time, and there are two employees working 20 hours per week, those two employees would be 1.0 FTE.

Authorized Positions are those referred to in the Table of Organization (or T.O.) for each department. This count includes only those positions paid for from the Salaries expenditure category for the organization units and agencies included in each department's appropriation. This excludes positions paid for from other expenditure categories, such as wages or per diem.

Other Charges positions are authorized under R.S. 39:2(5)(b) ...

(5)(b) "Authorized other charges positions" means the number of positions in an appropriation bill to be funded by the other charges continuing category of the accounting system for the state. The number may be adjusted during a fiscal year in accordance with law.

- [Act 377 of 2013 by Rep. Burrell]
- Positions coded in the Other Charges expenditure category
- These positions are usually associated with federal grants



Department of Agriculture and Forestry

Related Employment Information

Salaries and Related Benefits for the 586 Authorized Positions are listed below in Chart 1.
 In Chart 2, benefits are broken out to show the portion paid for active versus retired employees.
 This is where payments for the Unfunded Accrued Liability (UAL) can be found.

1.

Personal Services	2023 Actual	2024 Actual	2025 Enacted	2026 Recommended
Salaries	\$34,621,673	\$37,262,170	\$36,723,453	\$37,732,142
Other Compensation	\$1,426,478	\$1,823,695	\$1,783,007	\$1,783,007
Related Benefits	\$23,678,220	\$23,747,888	\$23,738,188	\$23,974,618
Total Personal Services	\$59,726,371	\$62,833,752	\$62,244,648	\$63,489,767

Average T.O. Salary = \$54,967

Examples of Other Compensation include pay for WAE employees, part-time employees, student workers, etc.

2.

Related Benefits FY25 Recommended	Total Funding	%
Total Related Benefits	\$23,974,618	
UAL payments	\$9,199,264	38%
Retiree Health Benefits	\$5,715,525	
Remaining Benefits*	\$9,108,599	
Means of Finance	General Fund = 38%	Other = 62%

Department Demographics	Total	%
Gender		
Female	203	35
Male	370	65
Race/Ethnicity		
White	502	88
Black	59	10
Number of employees classified in other categories (Asian, Indian, Hawaiian/Pacific and Declined)	12	2
Currently in DROP or Eligible to Retire	39	7

* Remaining Benefits include employer contribution to authorized positions' retirement, health, Medicare, FICA, Emoluments etc. The authorized positions include authorized T.O. positions and authorized other charges positions, both filled and vacant.

Other Charges Benefits
\$48,770



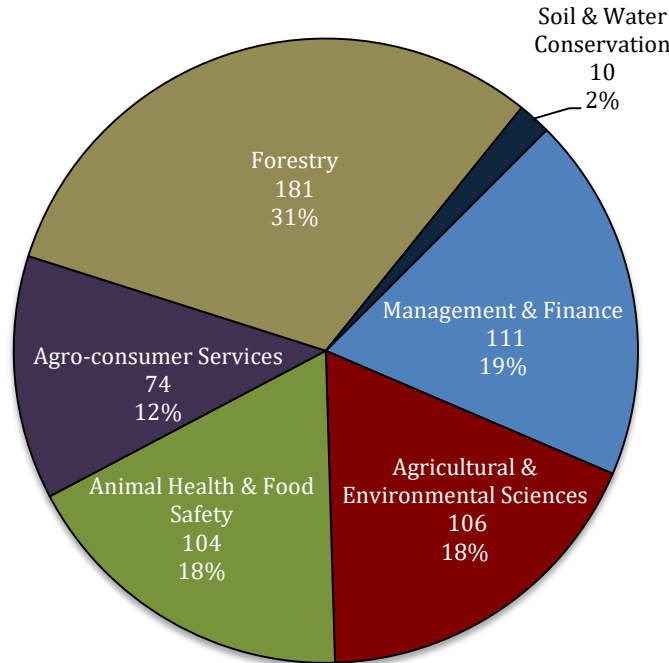
Department of Agriculture and Forestry

FY26 Recommended Total Authorized Positions by Agency

Forestry – The largest categories of positions are spread among fire districts, including District 6 - Hammond, District 4 – Oberlin, District 3 – Jena, District 1 – Haughton, and District 2 – Monroe. The remaining positions are spread among administration, central services, enforcement, and education.

Agro-Consumer Services – The largest categories of positions include Weights and Measures and the Agricultural Commodities and Dealers Warehouse Activity. The remaining positions are spread among the Dairy Stabilization Board and Administration.

Animal Health & Food Safety – The largest categories of positions include Federal/State Meat Activity, the Livestock Sanitary Board, and the Food Distribution Activity. The remaining positions are spread among Poultry and Eggs, Fruit and Vegetables, Livestock Brand Commission, Promotion and Research, and the Feed Program.



Soil and Water Conservation – Duties of these positions include administration of the Agricultural Solid Waste Program, Federal Conservation Program, Coastal Marsh Vegetation Planting Program, USDA State Cooperative Soil Survey Program, EPA Clean Water Act provisions, and educational outreach.

Management & Finance – The largest categories of positions include support services and fleet and facility operations. The remaining positions are spread among executive functions, IT, print shop, market information, Commodity Promotion and Research, Indian Creek Recreation Area, and the La. Agricultural Finance Authority.

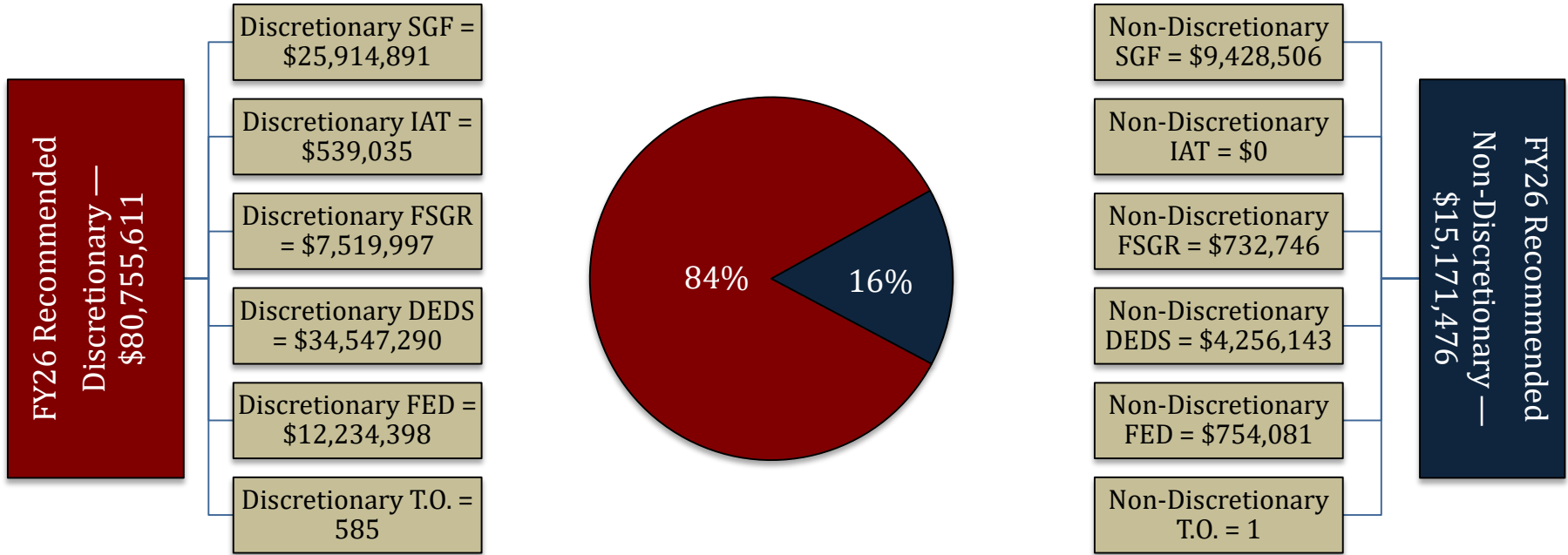
Agricultural & Environmental Services – The largest categories of positions include the Pesticide & Environmental Program, the Agricultural Chemistry Program, and the Horticulture & Quarantine Program. The remaining positions are spread among the Seed, Sweet Potato, Pest Control, Pesticide Enforcement, Pesticide Certification, USDA Horticulture, Boll Weevil, and Food Safety Programs.

FY26 Recommended Dept. of Ag. & Forestry	
Management & Finance	111
Agric. & Environmental Sciences	106
Animal Health & Food Safety	104
Agro-consumer Services	74
Forestry	181
Soil & Water Conservation	10
Total Positions	586



Department of Agriculture and Forestry

FY26 Discretionary/Non-Discretionary Comparison



Total Discretionary Funding by Office		
Management & Finance	\$ 20,057,362	25%
Agricultural & Environmental Sciences	\$ 12,538,660	16%
Animal Health & Food Safety	\$ 14,057,948	17%
Agro-Consumer Services	\$ 7,701,468	10%
Forestry	\$ 23,701,769	29%
Soil & Water Conservation	\$ 2,698,404	3%
Total Discretionary	\$ 80,755,611	100%

Total Non-Discretionary Funding by Type		
Constitutional Requirements	\$ 9,354,054	62%
Unavoidable Obligations	\$ 5,817,422	38%
Total Non-Discretionary	\$ 15,171,476	100%

Constitutional Requirements = UAL contributions, Salary and related benefits of the commissioner.

Unavoidable Obligations = Retirees Group Insurance and Legislative Auditor Fees.



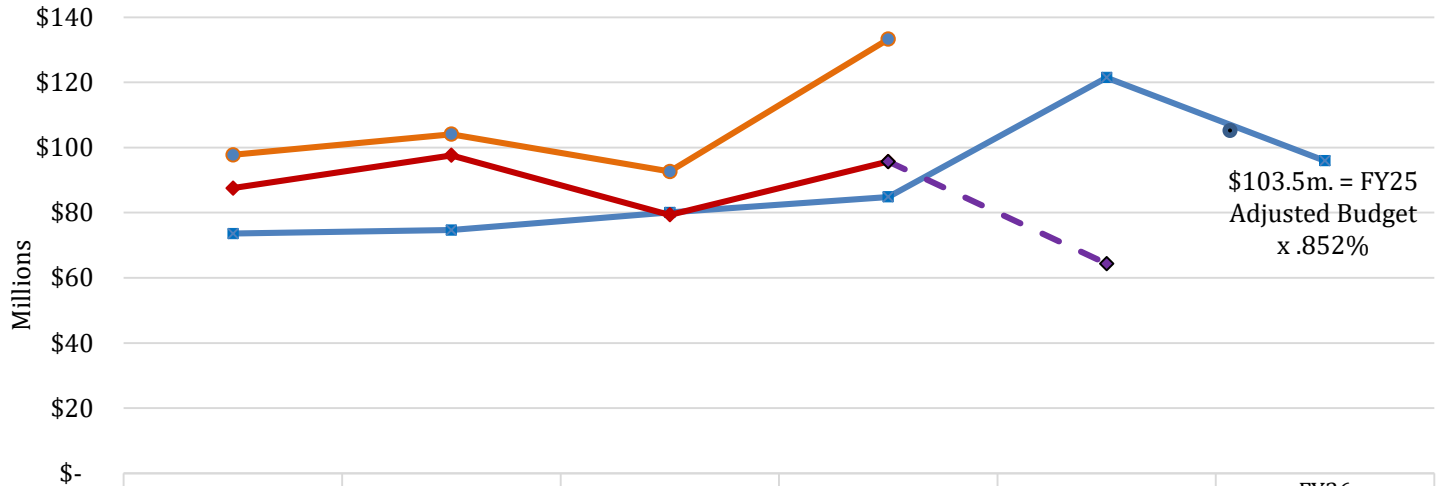
04-160 – Agriculture and Forestry

Enacted & FYE Budget vs. Actual Expenditures FY21 to FY24

FYE Budget = "Fiscal Year End" Budget includes all in-house and regular BA-7s through June 30 of the fiscal year. For FY25, it is as of January.

FY25 Known Supplemental Needs:
\$0

FY24 General Fund Reversions:
\$0



	FY21	FY22	FY23	FY24	FY25 EOB	FY26 Recommended
Enacted Budget	\$73,576,706	\$74,650,094	\$80,090,629	\$84,819,804	\$121,486,247	\$95,927,087
FYE Budget	\$97,760,009	\$104,088,124	\$92,635,684	\$133,273,330		
Actual Expenditures	\$87,517,228	\$97,628,355	\$79,315,770	\$95,705,586		
FY25 Expenditure Trend				\$95,705,586	\$64,329,480	

Monthly Budget Activity

	FY25 Adjusted Budget	FY25 Aggregate Expenditures	Remaining Budget Authority	Percent Expended To Date
Jul-24	\$ 91,408,545	\$ 6,211,693	\$ 85,196,852	6.8%
Aug-24	\$ 120,472,727	\$ 12,305,544	\$ 108,167,183	10.2%
Sep-24	\$ 120,472,727	\$ 6,489,698	\$ 113,983,029	5.4%
Oct-24	\$ 121,486,247	\$ 10,116,529	\$ 111,369,718	8.3%
Nov-24	\$ 121,486,247	\$ 9,738,341	\$ 111,747,906	8.0%
Dec-24	\$ 121,900,102	\$ 6,488,657	\$ 115,411,445	5.3%
Jan-25	\$ 121,900,102	\$ 6,248,365	\$ 115,651,737	5.1%

Monthly Budget Activity

	FY25 Adjusted Budget	FY25 Aggregate Expenditures	Remaining Budget Authority	Percent Expended To Date
<i>(Trend based on average monthly expenditures to date)</i>				
Feb-25	\$ 121,900,102	\$ 60,758,986	\$ 61,141,116	49.8%
Mar-25	\$ 121,900,102	\$ 61,651,610	\$ 60,248,492	50.6%
Apr-25	\$ 121,900,102	\$ 62,544,233	\$ 59,355,869	51.3%
May-25	\$ 121,900,102	\$ 63,436,857	\$ 58,463,245	52.0%
Jun-25	\$ 121,900,102	\$ 64,329,480	\$ 57,570,622	52.8%

Historical Year End Average

85.2% 18



Department of Agriculture and Forestry

Schedule 20-941 Ag & Forestry Pass-Through Funds (Located in Schedule 20 – Other Requirements)

- Agriculture and Forestry Pass Through Funds include pass through funds for the 44 Soil and Water Conservation Districts in Louisiana, the Temporary Emergency Food Assistance Program, Specialty Crop Block Grant, Volunteer Fire Assistance, Forest Land Enhancement Program, Southern Pine Beetle, Urban and Community Forestry, State Fire Assistance – Mitigation, Forest Stewardship Program, Forest Health Monitoring, and the Forest Productivity Program.
- This program is funded with state general fund, interagency transfers, fees and self-generated revenues, statutory dedications and federal funds.
 - Interagency transfers are received from the Office of Coastal Protection and Restoration and the Louisiana State Racing Commission.
 - Statutory dedications are received from the Louisiana Agricultural Finance Authority Fund; the Forest Productivity Fund that receives 75% of the state's share of the timber severance tax; the Grain and Cotton Indemnity Fund; and the Agricultural Commodity Commission Self-insurance Fund.
 - Federal funds are received from the U.S. Forest Service for 1) Urban Forestry Assistance, 2) Southern Pine Beetle, 3) Forest Land Enhancement, 4) Forest Health Program, 5) Volunteer Fire Assistance, 6) Forestry Stewardship Program, and 7) Fire Assistance. Federal funds are also received for Temporary Emergency Food Assistance Program, Specialty Crop Block Grant, and Soil and Water Conservation.

Amount	Expenditure Description
\$13,785,292	The Emergency Food Assistance Program
\$2,200,000	Soil and Water District Statewide Allocations
\$4,000,000	Forestry Productivity Program
\$750,000	Specialty Crop - Contractual Obligation between the Department and Producers
\$266,001	Agricultural Commodity Commission Self-Insurance Fund
\$753,522	Grain and Cotton Indemnity Fund
\$248,532	Payments for Soil and Water District Payroll
\$2,834,670	Forestry - Payment to local and parish entities as well as non-governmental organizations
\$500,000	Louisiana Equine Promotion and Research Program
\$889,000	Market Umbrella for the Market Match program extension SNAP
\$2,700,000	Soil and Water - Agreement between the Department and the Natural Resources Conservation Service
\$5,841	Uniform Payroll Sysytem (UPS) Fees
\$580,000	Transfer to LA Thoroughbred Breeders Association (LSRC), Vegetative Planting Payments to Districts (CPRA), and Lake St. Joseph Nutrient Loading Reduction BIL Gulf Hypoxia Program (DEQ).
\$29,512,858	TOTAL